



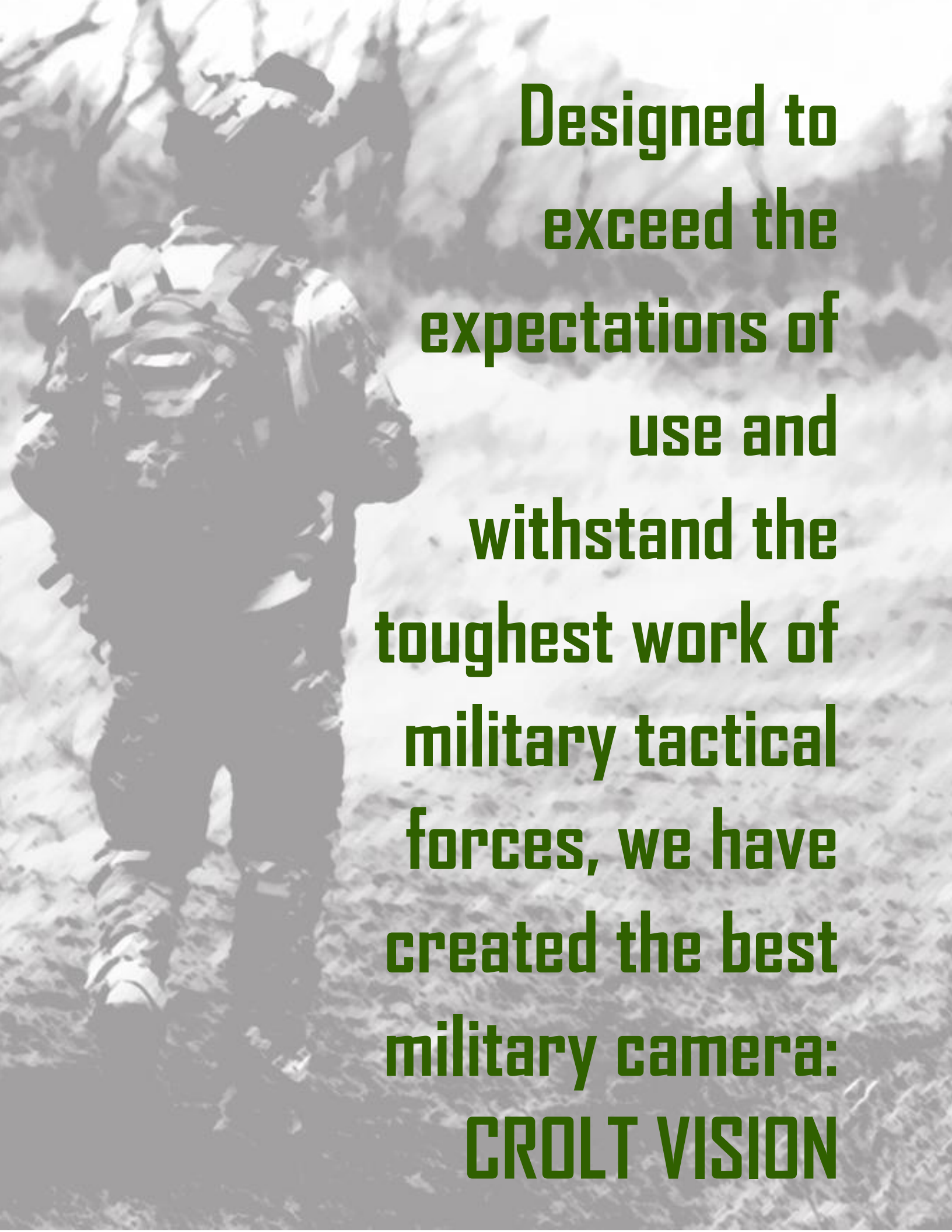
4K

Mod CR23

croltvision.com

**THE MOST COMPLETE
MILITARY CAMERA**





**Designed to
exceed the
expectations of
use and
withstand the
toughest work of
military tactical
forces, we have
created the best
military camera:
CROLT VISION**



4G/5G* LIVE
STREAMING



GPS LOCATION



STEREO
MICROPHONE



PROTECTION AGAINST
WATER & FALLS



DOUBLE FULL
HD CAMERA 60 FPS



INFRARED
VISION



SIMPLE &
ADAPTABLE ASSEMBLY



PANIC BUTTON
FOR EMERGENCIES



USB CONNECTIVITY



HDMI PORT



WIRELESS
WRIST CONTROL

**No need for extra accessories or devices*



"For a video camera to be trusted by special tactical teams, it needs to be specifically conceived, designed and built for their particular needs and applications"



The **CROLT VISION** camera is completely designed for the field of tactical operations. It has been designed and built from scratch to fit the needs.



Frontal Camera	4K 3840 x 2160
Rear Camera	1080 HD
Dimensions	Length 4.72in Width 2.75in Height 1.77in
Weight	8.29oz
Photo	16mp (manual) Automatic (1,5,10,30,60s)
Image	Night vision, Full HD visible light, and B/W in Infrared (IR)
Video Format	MP4
Double Capture	Take photos and video at the same time
Waterproof	IEC-60529: IP68
Watch Type Remote Control	Clock-type remote control, allows you to start/stop recording on one or both cameras, shows camera status and battery level, SOS (panic) button
Internal Memory	Memory included 256 GB
Wireless	WiFi 802.11G
Battery	Battery life 6hrs Li-ion 3500mAh
Lens	F2.8, field of view 140 degrees, cmos
Connectivity	Charge and sync USB and HDMI cable for video playback
Data Transmission	Live transmission (streaming) via 4G, integrated equipment
Data Transmission Software	It allows to observe in real time what the camera transmits (streaming) in one or both cameras as well as the location (GPS)
Fixation	Secure Velcro attachment to the helmet and additional accessories for various mountings includes picatinny rail
Includes	3 3500mAh rechargeable batteries (6hrs each), 2 Velcro mounting straps, various mounting accessories including picatinny rail, USB and HDMI connectivity cables, transport bag and shoulder strap, cigarette-type vehicle charger
Operating Temperature	-4°F a 140°F
Exposure & Light Control	Automatics

Accessories

Developed specifically for the use of the **CROLT VISION Dual Action GPS Camera**, it is designed to take advantage of the camera beyond the helmet. This simple accessory allows CROLT VISION cameras to be securely mounted to flat surfaces, tripods, gun rails and the universe of sports camera mounts.

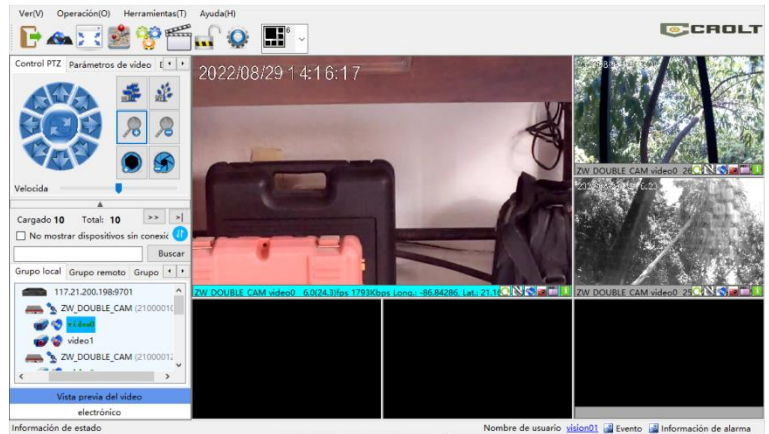


When operations do not require the use of a helmet, the shoulder support provides an ideal alternative wearing solution. Secured with industrial grade Velcro®, it is compatible with vests, chest harnesses, packs and other shoulder straps.

And when the camera is not being used CROLT VISION, protect it with MOLLE compatible.



The CroltVision does not have an App for mobile devices, however, it does have software for live transmission in real time, as well as GPS location. This allows you to watch the stream from anywhere, as connecting a device via Bluetooth requires you to be no more than 10m away from the camera and can be distracting.



To facilitate the operation, the CroltVision camera has a **Remote Control** that shows, by means of an **INDICATOR LED**, the status of the camera and battery level.





What includes?

Military Tactical Video Recording Device Model CR23 with double cameras (Front and Rear) with real-time transmission capacity (streaming) 4G, 5G Cellular, special adjustment to the Croltvision brand helmet includes command control (Remote Control) type watch.

Accessories

A. Assemblies:

- 2 (Two) Picatinny rail adapter.*
- 2 (Two) Secure adapter for helmet surface (velcro)*
- 2 (Two) Universal adapter for tripod.*

B. 3 (Three) High Capacity Polymer Lithium Ion 3,500 mAh Batteries. Duration of 6 hours each.

C. Integrated night recording (IR) capability.

D. USB type cable for charging and data transfer, Mini HDMI to HDMI type Cable for Video transfer.

E. Sheath or transport bag with MOLLE type fixing system. and Shoulder strap with Velcro to fix the camera on the shoulder.

F. Fast battery charger with double input, one USB type A input and one USB type C input with the capacity to charge two batteries simultaneously

G. Double input cigarette type vehicle charger, one USB type A input and one USB type C input.

H. User manual in Spanish.





info@croltvision.com

croltvision.com